

# INSTALLATION GUIDE

## Draw wire sensors series SXM30

For further information please see the data sheet at [www.waycon.biz/products/draw-wire-sensors/](http://www.waycon.biz/products/draw-wire-sensors/)

### FIRST STEPS

WayCon Positionsmesstechnik GmbH would like to thank you for the trust you have placed in us and our products. This manual will make you familiar with the installation and operation of our draw wire sensors. Please read this manual carefully before initial operation!

#### Unpacking and checking:

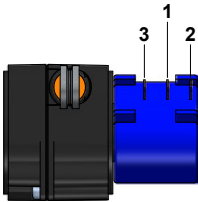
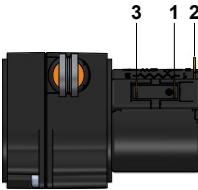
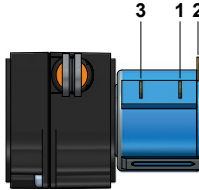
Carefully lift the device out of the box by grabbing the housing. Do not pull the rope. After unpacking the device, check it for any visible damage as a result of rough handling during the shipment. Check the delivery for completeness.

If necessary consult the transportation company, or contact WayCon directly for further assistance.

### HANDLING THE WIRE ROPE

- When installing or operating the sensor, take care not to let the rope snap back by mistake or extract the rope over the specified measurement range, as this might destroy the sensor.
- The rope must be extracted from the sensor vertically. The maximum variation from the vertical is 3°. Avoid extracting the rope at an inclination, since the durability of the instrument would shorten considerably. If it is not possible to keep the limit of 3°, a deflection pulley has to be used.
- Guide the rope preferably in corners or guarded in channels to prevent pollution or accidental touch.
- Avoid guiding the rope over edges or corners. Use a deflection pulley instead.
- Do not operate the sensor if the rope is buckled or damaged. A ripping of the rope may lead to injuries or a damaging of the sensor.

### ELECTRICAL CONNECTION

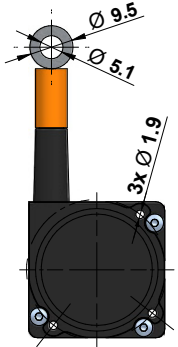
Solder terminals	Function	Economy version	Standard version up to 375 mm	Standard version from 500 mm
1	GND			
2	Cursor			
3	+V			



## MOUNTING OF THE SENSOR

### Mounting via fixation holes

- The SXM30 draw-wire sensor offers 3 fixation holes.
- Use self-tapping KV screws with a thread diameter of  $\text{Ø}2.2$  mm that are suitable for plastic.
- Note the tightening torque of 0.4 Nm.



### Montage via mounting bracket

- The mounting bracket can be attached to the sensor in  $90^\circ$  steps using 3 screws.
- Use the 3 screws supplied for this purpose.
- Note the tightening torque of 0.4 Nm.

